



> I design
< integrate
construct

> inception to completion
> big picture to last detail

the partners

- > With over 20 years' experience in high profile projects and technology-based organizations, Antoine Dammous is a leader in Engineering Management and Intelligent Buildings Solutions.
- > A world-class technology expert, leader in Telecommunication and Site frastructure, and Accredited Tie Designer, Elie Siam has established himself as an Authority in Mission Critical Facility and Integrated Systems Design.
- > A Certified Data Center Designer and LEED AP with a distinctive combination of engineering and construction management expertise, Adib Schreim has an extensive experience in building services, infrastructure and mission critical facilities and vast exposure to high-tech projects.



the d-i-c profile

> Design Integrate Construct (D-I-C) is a design-built firm delivering breakthrough solutions, seamless integration and impeccable implementation of highly complex projects in mission critical, renewable energy, and infrastructure.



the d-i-c profile

> The three managing partners worked together for over ten years, combining complementary engineering expertise and sharing a passion for cutting edge projects. In 2012, they co-founded D-I-C with a mission to provide their clients with unparalleled capabilities, pushing the boundary of project design and delivery to the new levels.

> Today, D-I-C stands as the partner of choice for clients looking for end to end innovative services that optimize performance, mitigate risks, maximize energy efficiency and bring projects to full fruition on time and on budget.



the d-i-c approach

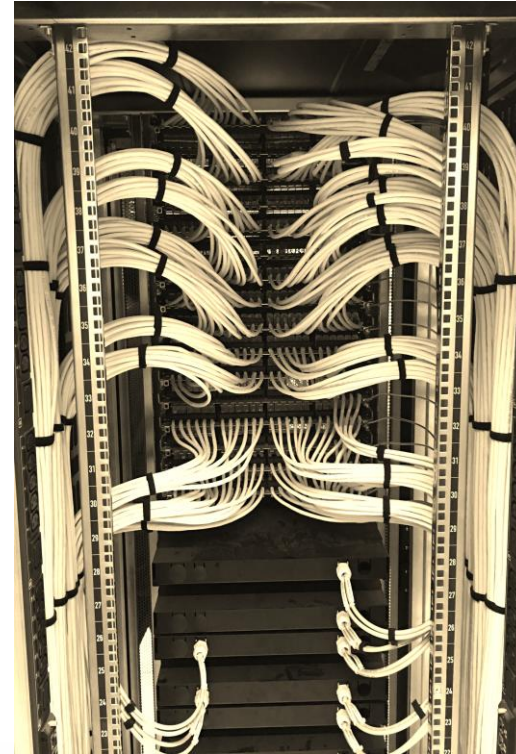
Central to our mission is a unique approach
to combine design and construction
we call it the D-I-C approach

- > Visualize user's solutions
- > Predict by modeling and simulation
- > Integrate design and construction
 - > Assemble the right team
 - > Select equipment with no bias
 - > Deliver an unequivocal project



services

- > Data Center Design & Engineering
 - > Need Site Analysis
 - > Existing Facility Evaluation
 - > Infrastructure Design
- > Energy Efficiency Assessments
 - > Risk Assessments
- > Data Center Construction
- > Construction Management
 - > Design Build



clients and projects

- Bank of Beirut and the Arab Countries (BBAC) – Main data center
- Lebanese Canadian Bank – Main data center
- Lebanese American University – Main data center, Beirut
- Credit Libanais – Main data center, Beirut
- Lebanon & Gulf Bank – Main data center expansion, Beirut
- IBL Bank - Disaster Recovery Site, Byblos
- Bloomberg - Main data center, DIFC, Dubai
- Fransabank – Main data center, Beirut
- Fransabank-BLC Group – Business Continuity, Ghineh
- American Community School (ACS) –Beirut
- Société Générale de Banque au Liban - Main data center, Beirut
- Société Générale de Banque Jordanie – Main data center, Amman
- CSC Bank – Main Data Center, Beirut
- CSC 24/7 – Main Data Center, Larnaca



clients and projects

- > Saudi Telecom (STC) – 1200 server rack colocation data center, Riyadh– *For Edarat*
- > Saudi Telecom (STC) – 600 server rack colocation data center, Dammam– *For Edarat*
- > InconetData Management – Main data center, Burj ELGhazal, Beirut
- > France Telecom Liban (FTML) – South Lebanon GSM switch, Mekalles
- > First National Bank – Main data center, Beirut
- > Ministry of Water and Electricity – Main data center, Khartoum, Sudan
- > Emirates Lebanon Bank (ELB) – Main data center, Beirut
- > Murex Systems sal – Main data center, Beirut
- > Salalah Airport – Main data center, Oman





stc riyyadh

project highlights

1200 Racks - 15 MW Power – 246 Million SAR – Tier III certified



Complete turnkey design (Architecture, Structure, MEP, IT) for Saudi Telecom Company, KSA's largest telecom operator. Work done for Edarat, KSA.

Colocation data center for approx. 1,200 racks. Certified Tier III from Uptime Institute for Design and Construction. White space of 3,000 sqm with 7300 kW net IT load with continuous cooling.

Power plant consisted of 15 MW.

Project Cost approx. 70 millions USD. Project is complete



stc dammam

project highlights

460 Racks – 7.3 MW Power – 138 Million SAR – Tier III certified



Complete turnkey design (Architecture, Structure, MEP, IT) for Saudi Telecom Company. Work done for Edarat, KSA.

Colocation data center for approx. 460 racks. Certified Tier III from Uptime Institute for Design and Construction. White space of 1,600 sqm with 1900 kW net IT load, with continuous cooling.

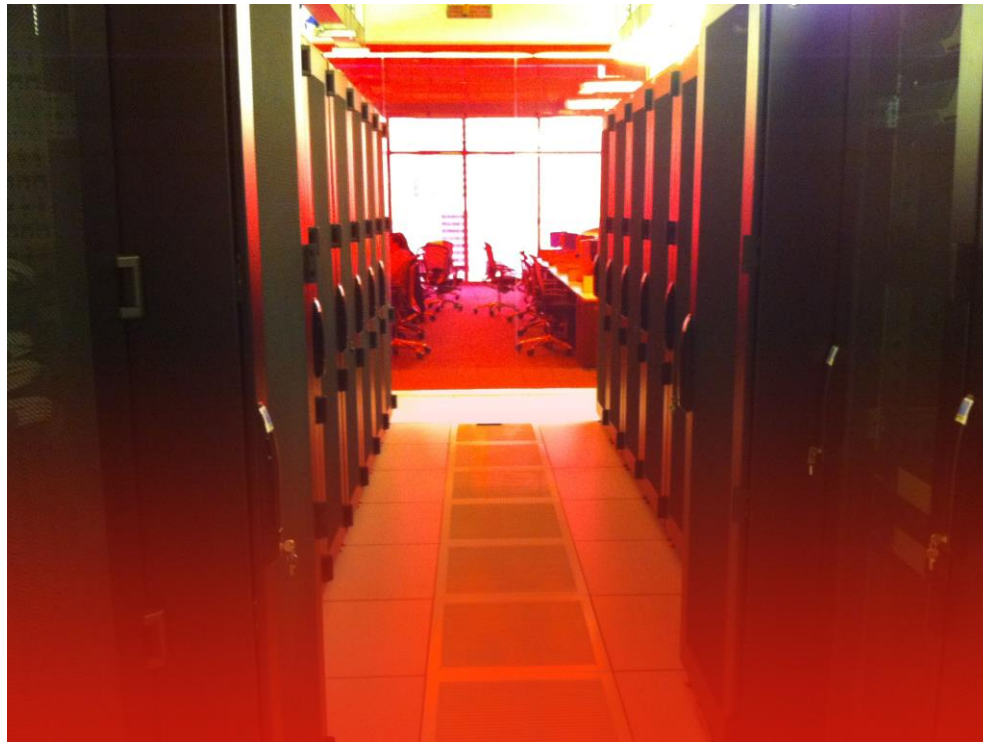
Power plant consisted of 7.3MW.

Project Cost approx. 40 millions USD . Project is complete.



projects insight

bloomberg dubai

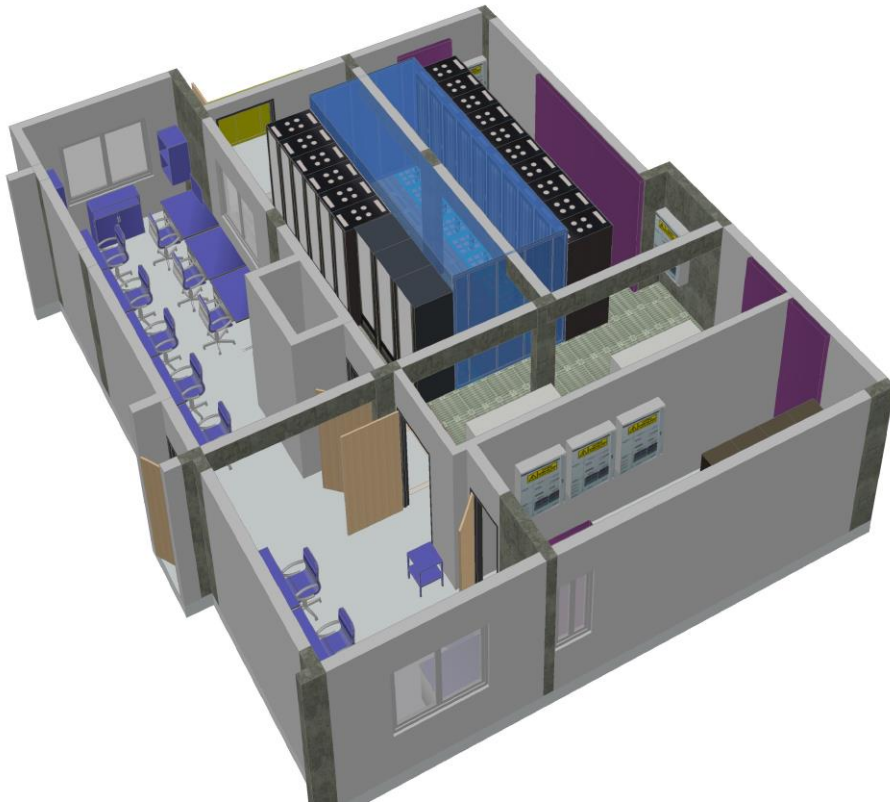


Design Supervision and Commissioning for the main office
data center in Dubai International Financial Center



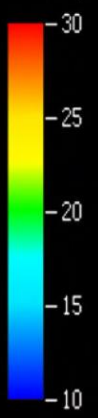
projects insight

CSC CYPRUS

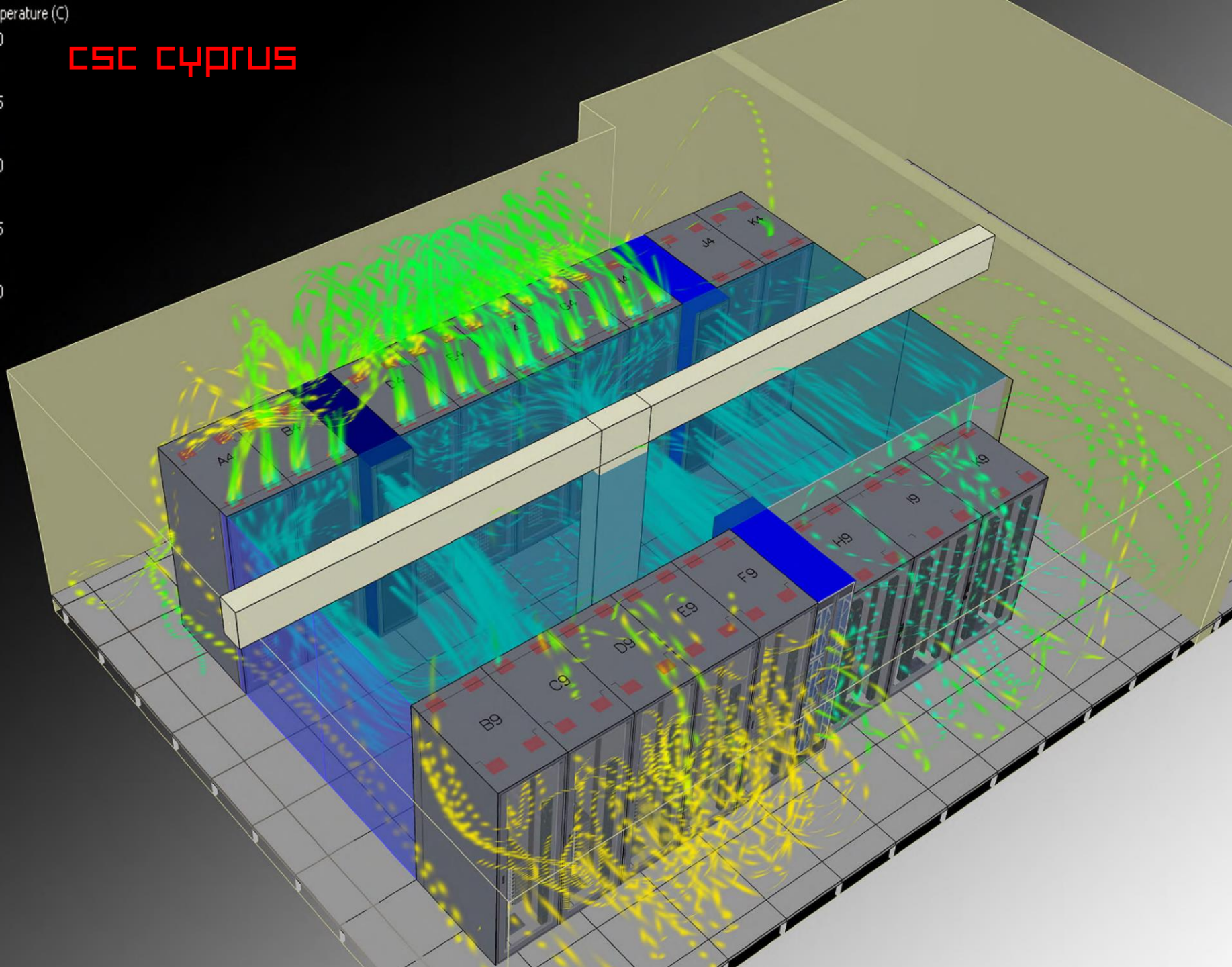


New Data Center serving as a Disaster Recovery, incorporated within an existing building in Larnaca

Temperature (C)



CSC CYPRUS





projects insight

credit libanais

Main Data Center
for the bank in
Beirut for
approximately 45
high density



Scope included
Design, Integration
and Commissioning

credit Libanais



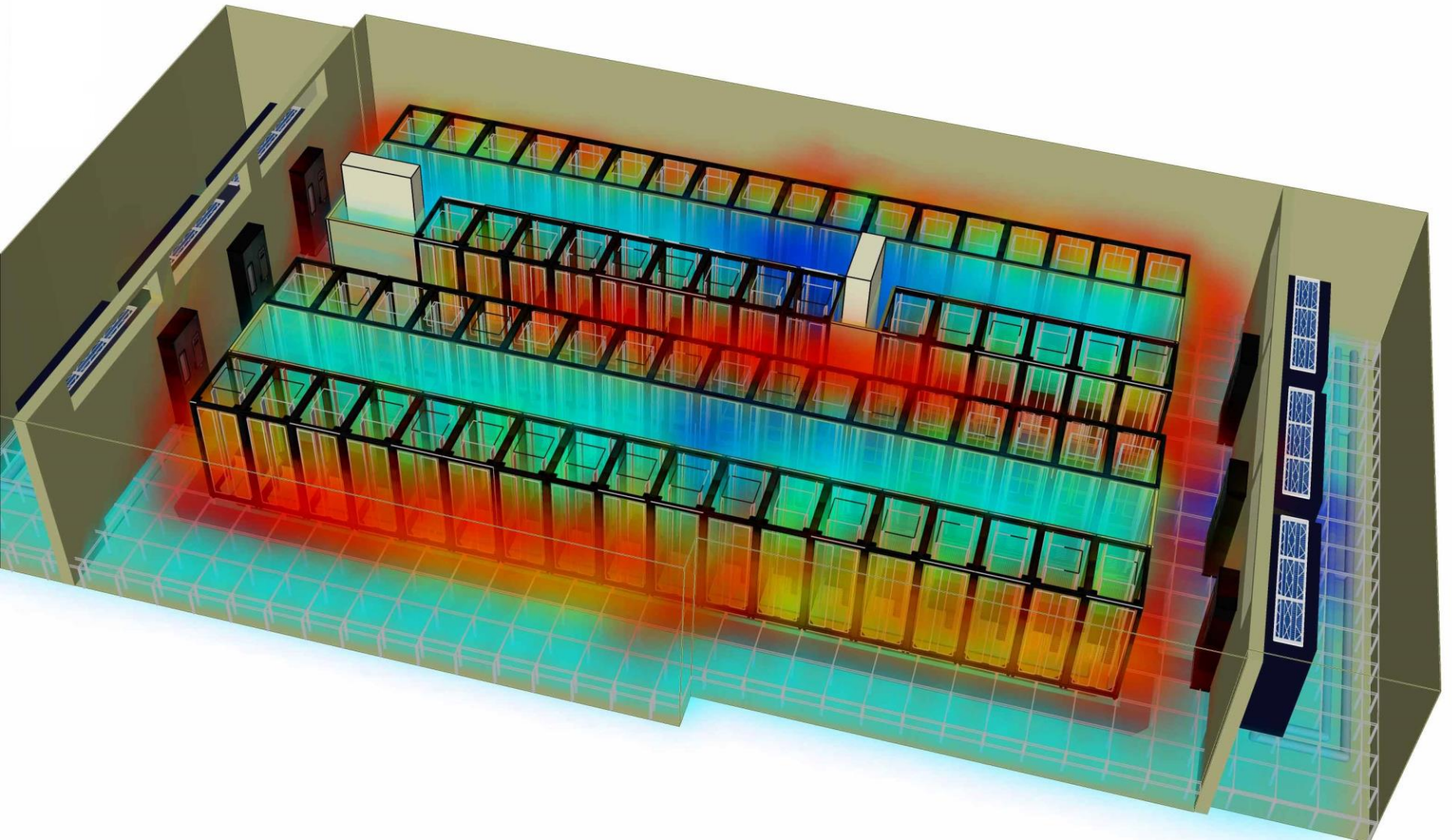


projects insight

fransabank disaster recovery and main dc



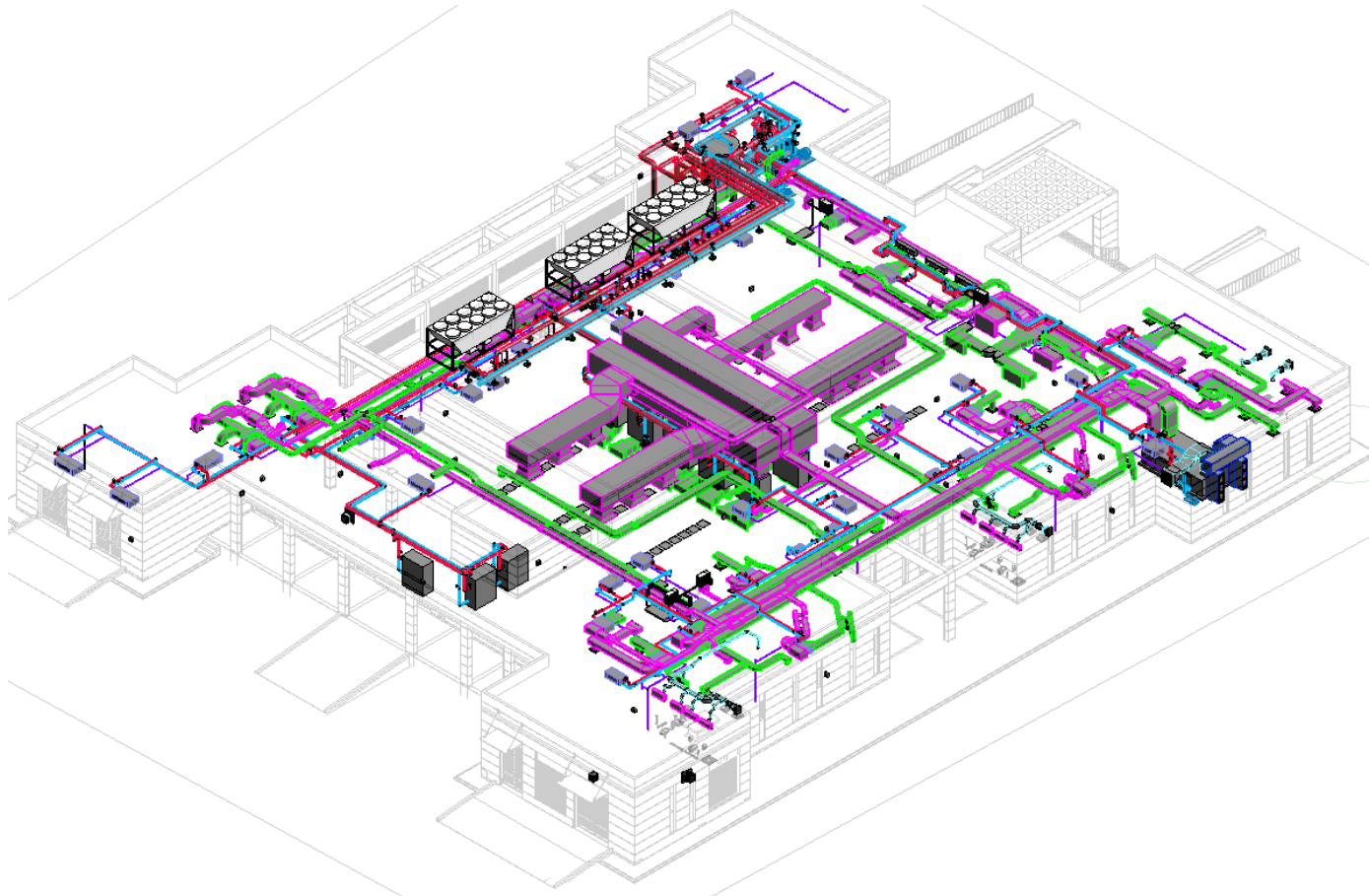
DATA-CENTER (Temperature Result Cloud)





projects insight

salalah airport dc





projects insight

societe generale de banque en jordanie
(sgbj)



financials

- > DIC always have a positive cash flow
- > Excellent reputation with suppliers
- > Annual turn-over of approximately 1 million USD
- > Reference banks: Bank Audi , Bank of Beirut



RESOURCES

- > DIC has:
 - > 3 founding partners/engineers
 - > 2 senior engineers
Lara Bougharios, Nicole Sakr
 - > 2 engineering supervisors
Dahoud Ayoub, Anthony Katrib
 - > and 2 technicians
Chahine Haddad, Samir Zogheib
- > It co-shares its additional human resources needs with Pierre Dammous & Partners (over 70 employees)

Lebanon & Gulf Bank Bldg, Main Street Dora, Beirut

+961 1 255002

202 Le Solarium Bldg, Dubai Silicon Oasis

+971 4 2730873

www.dic-me.com

